

BUSINESS INDICATORS

**AUSTRALIAN
CAPITAL
TERRITORY**

EMBARGO: 11:30AM (CANBERRA TIME) TUES 24 APR 2001

C O N T E N T S

	<i>page</i>
Notes	2
Summary of findings	3
Selected business indicators	5

FEATURE ARTICLE

Job Search Experience of Unemployed Persons in the ACT, July 2000. . .	6
--	---

TABLES

1 Business indicators	9
2 ACT in relation to the rest of Australia	12
3 ACT in relation to the rest of Australia—percentage changes	13

INFORMATION

Index of Feature Articles published in ACT Business Indicators	14
--	----

- For further information about these and related statistics, contact Nives Marelic on Canberra 02 6207 0315, or the National Information Service on 1300 135 070.

NOTES

FORTHCOMING ISSUES

<i>ISSUE</i>	<i>RELEASE DATE</i>
May 2001	18 May 2001
June 2001	22 June 2001
July 2001	20 July 2001
August 2001	17 August 2001
September 2001	21 September 2001

DATA CHANGES

ABS statistical series are being impacted to varying degrees as a result of The New Tax System (TNTS), introduced in Australia from 1 July 2000. TNTS includes the removal of Wholesale Sales Tax and the introduction of a Goods and Services Tax (GST).

THE IMPACT OF THE NEW TAX SYSTEM ON DATA SERIES IN THIS PUBLICATION

Users of Building Approvals data should exercise caution when analysing movements in the value series over the next few months as they have been affected in a number of ways. For further information see *Building Approvals, Australia* (Cat. no. 8731.0).

Users of Capital Expenditure data should exercise caution when analysing estimates of expected expenditure for 2000–01 financial year. Businesses in the Survey of New Capital Expenditure have been asked to report expected expenditure for 2000–01 financial year based on the cost to them under TNTS. For further information see *Private New Capital Expenditure, State Estimates* (Cat. no. 5646.0).

Users of Retail data should exercise caution when analysing movements in the series over time. Estimates of retail turnover in both original and seasonally adjusted terms reflect unusually large spending ahead of the GST. The trend series attempts to measure underlying behaviour and, in the short term, this measurement may be adversely affected by an unusual influence in the original and seasonally adjusted data. For further information see *Retail Trade, Australia* (Cat. no. 8501.0).

SYMBOLS AND OTHER USAGES

km ²	square kilometres
nip	30 mls
no.	number
n.a.	not available
n.p.	not available for publication
p	preliminary
qtr	quarter
'000	thousands
%	per cent
. .	not applicable
*	Represents data with a standard error of greater than 25%. Caution should be exercised when using this data.
—	nil or rounded to zero

Tracy Stewart
Regional Director, Australian Capital Territory

SUMMARY OF FINDINGS

UPDATED SERIES

Series updated since the March 2001 issue are: estimated population, building approvals, housing finance, new motor vehicle registrations, labour force, industrial disputes, retail turnover, tourist accommodation, business expectations, private new capital expenditure, job vacancies and wage and salary earners. The feature article, beginning on page 6 is Job Search Experience of Unemployed Persons in the ACT.

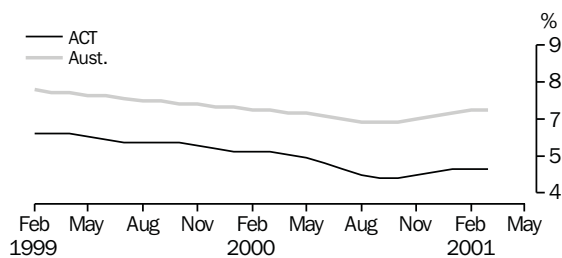
NOTABLE MOVEMENTS

Population	<p>During the September quarter 2000 the level of interstate migration out of ACT has recovered from the outflow of 569 people in the June quarter 2000 to an outflow of 162 people.</p> <p>For the September quarter 2000 the natural increase in the ACT was 699 people, an increase of 10% from the June quarter 2000.</p>
Building approvals	<p>In February 2001 the trend number of dwelling units approved in the ACT decreased to 131, down 9% from the previous month, and a decrease of 39% from February 2000. Nationally, the trend number of dwelling units approved in February 2001 decreased marginally from the previous month, down to 9,796 dwelling units.</p> <p>The value of non-residential building approvals for the ACT in February 2001 was \$12.4 million.</p> <p>The value of total building approvals in the ACT in February 2001 was \$37.8 million, down 21% from the previous month and 55% from February 2000. Nationally, the value of total building approvals in February 2001 was \$2,324.1 million, down 10% from the previous month and 28% from February 2000.</p>
Housing finance	<p>The trend number of dwelling units financed (including refinancing) in the ACT in February 2001 remained steady compared with the previous month. The trend estimate for the value of commitments in the ACT in February 2001 also remained steady compared with January 2001.</p>
New motor vehicle registrations	<p>At February 2001 the trend estimate for ACT new motor vehicle registrations remained steady compared with the previous month. Over the 12 months from February 2000, new motor vehicle registrations increased by 3%. Nationally, the trend for total new motor vehicle registrations in February 2001 decreased by 2% from the previous month and was up 7% from February 2000.</p>
Labour force	<p>At March 2001 the trend unemployment rate for the ACT remained steady at 4.8% compared with the previous month, and was down 0.6 percentage points compared with March 2000. The number of persons unemployed remained steady at 8,400 compared with the previous month and decreased by 11% compared with March 2000.</p>

Labour force <i>continued</i>	ACT trend employment in March 2001 also remained steady at 167,900 persons compared with the previous month and increased by 2% from March 2000. The trend ACT participation rate for March 2001 fell by 0.2 percentage points to 72.4% while the national rate fell by 0.1 percentage points to 63.6%. Nationally, trend employment remained steady in March 2001, while the trend unemployment also remained steady. The national trend unemployment rate in March 2001 also remained steady at 6.8%.
Industrial disputes	For the 12 months ended January 2001 there were 9 working days lost per thousand employees in the ACT compared to 58 days nationally.
Tourist accommodation	At December quarter 2000 the room occupancy rate for ACT hotels, motels, serviced apartments and guest houses was 59%, an increase of 2 percentage points from the previous quarter, and down 1 percentage point from the December quarter 1999. Nationally, in the December quarter 2000 the room occupancy rate remained steady at 59%.
Business expectations	Trading performance (operating income) in the ACT indicates a positive expectation of 1.3% in the short-term expected operating income from the sales of goods and services for the June quarter 2001. Nationally, there is an expected short-term decrease of 0.2% in this period. In the medium-term (March quarter 2001 to March quarter 2002), growth of 3.3% in sales is expected for the ACT, whilst the national expectation is 1.7%.
Retail turnover	Trend retail turnover in the ACT for February 2001 was \$270 million, remaining steady compared with the previous month. This is an increase of 15% compared with February 2000. Nationally, trend retail turnover also remained steady compared with the previous month and was up 7% compared with the previous year.
Private new capital expenditure	The trend private new capital expenditure in the ACT in the December quarter 2000 was \$110 million, an increase of 7% over the previous quarter and 22% over the December quarter 1999. Private new capital expenditure on buildings and structures increased by 24% from the previous quarter to \$41 million and increased by 95% from the same period in 1999. Equipment, plant and machinery remained steady at \$69 million compared with the previous quarter. Nationally, the trend private new capital expenditure was down 2% from the previous quarter and 3% from the December quarter 1999.
Job vacancies	There were 3,100 job vacancies in the ACT in the February quarter 2001, a decrease of 11% from the November quarter 2000 and 21% from February quarter 2000. Nationally, job vacancies in the February quarter 2001 decreased by 12% from the November quarter 2000 and 15% from February quarter 2000.
Wage and salary earners	At December quarter 2000 the trend number of wage and salary earners employed in the public and private sectors in the ACT remained steady at 154,300 persons compared with the September quarter 2000, and increased by 3% compared with the corresponding quarter of the previous year. Excluding self-employed persons, 55% of wage and salary earners in the ACT were in the private sector.

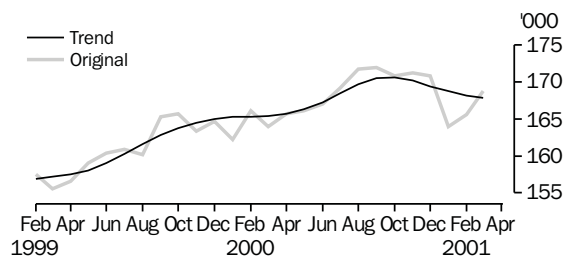
SELECTED BUSINESS INDICATORS

UNEMPLOYMENT RATE: Trend



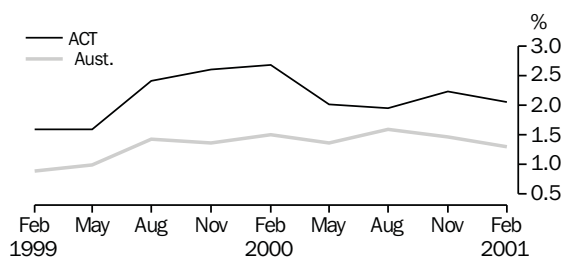
Source: Labour Force, Australia (Cat. no. 6202.0).

EMPLOYED PERSONS



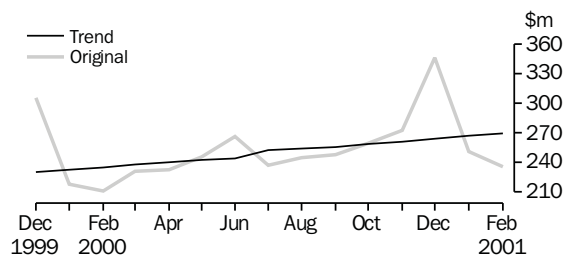
Source: Labour Force, Australia (Cat. no. 6202.0).

JOB VACANCY RATES



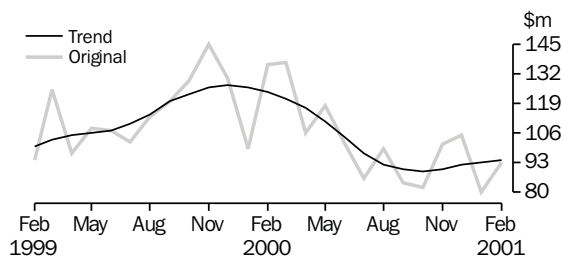
Source: Job Vacancies, Australia (Cat. no. 6354.0).

RETAIL TRADE TURNOVER



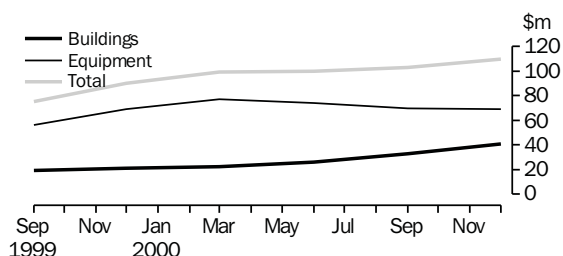
Source: Retail Trade, Australia (Cat. no. 8501.0).

HOUSING FINANCE



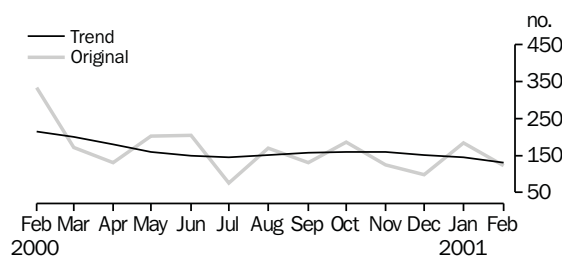
Source: Housing Finance, Australia (Cat. no. 5609.0).

PRIVATE NEW CAPITAL EXPENDITURE: Trend



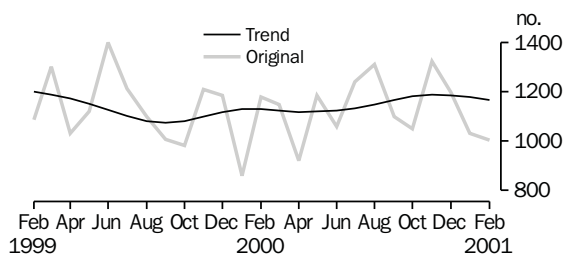
Source: Private New Capital Expenditure (Cat. no. 5646.0).

BUILDING APPROVALS, Dwelling units approved



Source: Building Approvals, Australia (Cat. no. 8731.0).

NEW MOTOR VEHICLE REGISTRATIONS



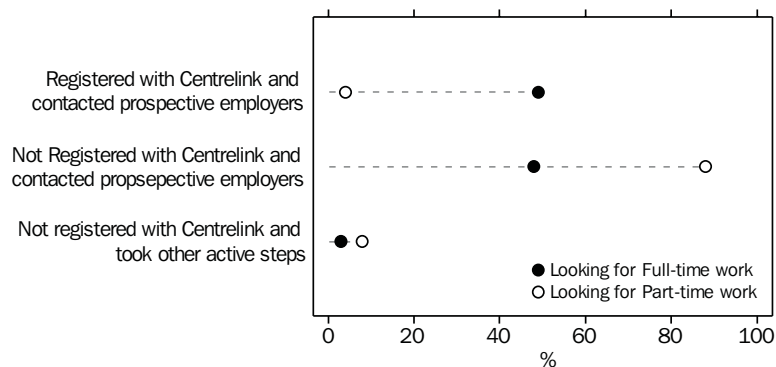
Source: New Motor Vehicle Registrations, Australia (Cat. no. 9301.0).

FEATURE ARTICLE

JOB SEARCH EXPERIENCE OF UNEMPLOYED PERSONS IN THE ACT, JULY 2000

Unemployed people	In July 2000, there were 6,600 unemployed people in the ACT, excluding those who were stood down, representing a decrease of 19% or 1,500 people since July 1999. Of those 6,600 unemployed in July 2000, there were 4,200 (64%) males and 2,400 (36%) females. Over six out of ten, (62%) or 4,100 unemployed people were looking for full-time work, a decrease over the 64% of unemployed looking for full-time work in July 1999. Of the 4,100 people seeking full time employment, 57% (or 2,400) were males, compared to 81% (or 4,200 males) in July 1999. Females looking for full-time work in July 2000 (43%) showed a significant rise over the July 1999 proportion of all those looking for full-time work (19%).
Centrelink registrations	In July 2000, 32% (2,100) of unemployed persons were registered as a jobseeker, with Centrelink, a decrease of 14 percentage points since July 1999. Jobseekers are those people who were not employed in the previous week and had actively looked for work at any time in the last four weeks, up to the end of the previous week. The majority (94%) of jobseekers had contacted prospective employers in their endeavours to find work.
Looking for full-time or part-time work	Unemployed persons looking for full-time work were more likely to be registered with Centrelink than those looking for part-time work. Of those looking for full-time work, 49% or 2,000 persons were registered with Centrelink. Of those looking for part-time work, the most common active step taken was contacting prospective employers without having registered with Centrelink (88% or 2,200 persons).

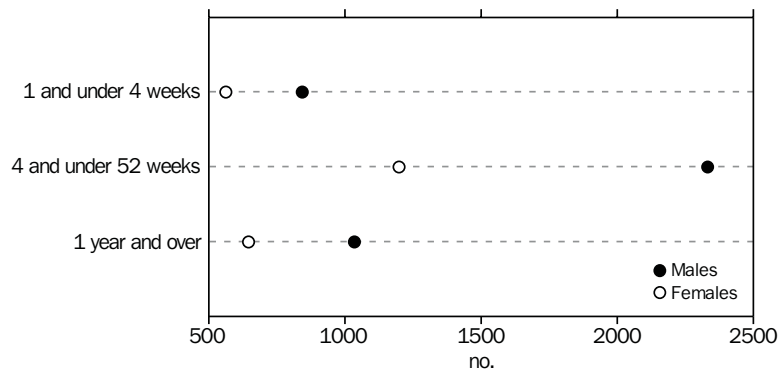
ACTIVE STEPS TAKEN TO FIND WORK



Source: Survey of Job Search Experience of Unemployed Persons, July 2000

Main difficulty finding work	<p>The main difficulty finding work that unemployed people reported were:</p> <ul style="list-style-type: none"> ■ insufficient work experience (21%); ■ considered too young or too old by employers (15%); ■ no vacancies in line of work (9%); or ■ lacked necessary skills/education (8%). <p>In the ACT, 19% reported no difficulty finding work. Nationally, the most commonly reported difficulties experienced by all those unemployed were 'too many applicants for available jobs' and 'being considered too young or too old by employers' (both at 13%).</p>
Educational attainment	<p>In July 2000, 43% of unemployed people did not have post-school qualifications. Of this group, half had not completed the highest level of secondary school available.</p> <p>Almost one-third (29%) of unemployed persons had post-school qualifications. Seven out of ten people in this group had a 'skilled or basic vocational qualification' and 30% had a 'bachelor degree or higher' post-school qualification.</p> <p>The remainder of the people unemployed were still at school (28%).</p>
Young unemployed	<p>Half (or 3,300) of the unemployed people were aged between 15 and 24 years, compared with July 1999 when 26% (or 3,200) of unemployed people were aged between 15 and 24 years. The main difficulty finding work, reported by one quarter of unemployed people aged 15 to 19 years was 'insufficient work experience'.</p> <p>Of those in the age group 20 to 24 years, 80% were seeking full-time employment. The main difficulty finding work for this age group was 'insufficient work experience' and 'lacked necessary skills/education' (both 39%).</p>
The long-term unemployed	<p>In July 2000, one quarter (1,700) of the unemployed people in the ACT were considered long-term unemployed, that is they had been unemployed for twelve months or longer. The majority (81%) were seeking full-time work and most (86%) reported they had not received any offers of employment during their current period of unemployment. Being 'considered too young or too old by employers' was an obstacle to finding work for more than one quarter (27%) of long-term unemployed, followed by 'insufficient work experience' (26%).</p>

DURATION OF CURRENT PERIOD OF UNEMPLOYMENT



Source: Survey of Job Search Experience of Unemployed Persons, July 2000.

Source The statistics in this article are compiled from data collected in the Job Search Experience of Unemployed Persons Survey that was conducted in July 2000.

Indicator	Unit	ACT			Aust.		
		% change from			% change from		
		Latest figure	Previous period	Same period previous year	Latest figure	Previous period	Same period previous year
POPULATION, VITALS AND LABOUR							
POPULATION, Jun qtr 00	'000	310.8	—	0.5	19 157.0	0.3	1.2
Natural increase	no.	633	−9.6	−12.2	33 179	11.8	9.5
Net migration	no.	−550	−833.3	−119.1	18 430	−22.2	6.4
Total growth	no.	83	−89.3	−82.3	51 609	−3.3	8.4
LABOUR FORCE, Mar 01							
Original series							
Employed	'000	168.8	1.9	2.9	9 065.2	0.2	1.3
Unemployed	'000	8.9	−12.7	−13.6	704.5	−5.9	0.6
Unemployment rate	%	5.0	−0.8	−0.9	7.2	−0.4	−0.1
Participation rate	%	73.0	0.8	0.4	63.6	−0.3	−0.1
Long-term unemployed, Feb 01	no.	2 609	78.0	32.4	177 257	16.3	−9.7
Long-term unemployed as percentage of total unemployed, Feb 01	%	25.6	10.5	6.6	23.7	1.6	−3.6
Trend series, Mar 01							
Employed	'000	167.9	−0.2	1.5	9 090.9	—	1.3
Unemployed	'000	8.4	−1.2	−10.6	667.2	1.2	2.2
Unemployment rate	%	4.8	—	−0.6	6.8	—	—
Participation rate	%	72.4	−0.2	72.4	63.6	0.1	0.1
WAGE AND SALARY EARNERS							
Number employed—Trend series, Dec qtr 00							
Private sector	'000	85.0	1.4	5.3	5 913.7	0.7	3.9
Public sector	'000	69.3	−0.4	1.0	1 452.6	—	−0.2
Total	'000	154.3	0.6	3.3	7 366.3	0.5	3.1
Gross earnings—Original series, Dec qtr 00							
Private sector	\$m	658.2	4.0	17.0	52 217.8	5.1	7.2
Public sector	\$m	842.5	−15.8	3.2	15 925.1	−1.2	4.2
Total	\$m	1 500.7	−8.1	8.8	68 142.9	3.5	6.5
JOB VACANCIES, Feb qtr 01	'000	3.1	−11.4	−20.5	95.5	−12.1	−15.3
INDUSTRIAL DISPUTES IN PROGRESS, Jan 01							
Working days lost	'000	—	−100.0	—	11.1	−5.9	−56.6
Days lost per '000 employees (year ended Jan 01)	no.	9.0	—	−70.0	58.0	−3.3	−34.8
HOUSING AND BUILDING ACTIVITY							
HOUSING FINANCE, Feb 01							
Secured commitments to individuals for							
Original series							
Construction of dwellings(a)	\$m	n.p.	n.p.	n.p.	516.0	12.9	−48.7
Purchase of new dwellings(a)	\$m	n.p.	n.p.	n.p.	206.0	−8.0	−23.7
Purchase of established dwellings	\$m	81.0	15.7	−30.2	4 944.0	7.0	−8.3
Re-financing	\$m	12.0	9.1	−20.0	1 142.0	8.7	7.5
Total housing commitments	\$m	93.0	16.3	−31.6	5 666.0	6.9	−15.0
Seasonally adjusted series							
Total housing commitments	\$m	94.0	9.3	−26.6	5 853.0	−3.6	−10.8
Trend series							
Total housing commitments	\$m	94.0	1.1	−24.2	6 059.0	1.2	−5.2
Dwelling units financed	no.	729	−1.0	−22.9	45 238	−0.1	−1.6
PRICE INDEX							
Established house price index, Dec qtr 00	no.	146.4	2.1	7.6	150.6	2.4	6.6
BUILDING APPROVALS, Feb 01							
Original series							
Dwelling units	no.	123	−33.2	−63.2	8 742	−1.0	−46.0
Value of new residential	\$m	18.6	−27.6	−53.1	1 211.4	1.5	−39.0
Value of residential alterations and additions	\$m	6.7	179.2	13.6	248.2	7.1	−20.5
Value of non-residential	\$m	12.4	−38.0	−60.3	864.4	−25.9	−7.4
Value of total building	\$m	37.8	−21.4	−55.4	2 324.1	−10.3	−28.1
Trend series							
Dwelling units	no.	131	−9.0	−39.1	9 796	−0.6	−37.4

(a) Data cells for Construction Finance in the ACT have been suppressed for the month of February 2001 for confidentiality reasons.

Indicator	Unit	ACT			Aust.		
		% change from			% change from		
		Latest figure	Previous period	Same period previous year	Latest figure	Previous period	Same period previous year
HOUSING AND BUILDING ACTIVITY continued							
BUILDING COMMENCEMENTS, Sep qtr 00							
New houses	no.	234	-44.7	-10.3	19 255	-35.8	-32.4
Value of houses commenced	\$m	36.3	-39.5	-5.7	2 705.2	-33.1	-25.4
Value of non-residential building commenced	\$m	26.4	-78.2	-19.8	2 637.9	-23.8	-11.2
Value of total commencements	\$m	87.6	-59.5	-30.4	7 356.5	-26.4	-21.4
ENGINEERING CONSTRUCTION, Sep qtr 00							
Private sector							
Value of work commenced	\$m	23.9	-53.5	-2.8	2 263.7	-18.2	-24.2
Value of work done	\$m	33.2	-31.3	0.3	2 725.4	-6.1	-14.7
Value of work yet to be done	\$m	43.6	-22.3	60.9	4 969.2	-0.4	-8.7
Public sector							
Value of work done	\$m	22.2	-28.2	-23.7	1 678.1	-24.9	5.0
PRICES, WAGES AND CONSUMER SPENDING							
CONSUMER PRICE INDEX, Dec qtr 00(a)							
Food	no.	135.9	1.3	3.8	133.4	0.8	3.5
Housing(b)	no.	107.1	0.4	10.2	107.7	0.3	8.1
Transportation(b)	no.	139.3	0.5	6.0	136.4	0.6	7.9
All groups	no.	131.1	0.3	6.0	131.3	0.3	5.8
AVERAGE WEEKLY EARNINGS, Nov qtr 00							
Full-time adult ordinary time earnings							
Original series							
Males	\$	1 018.2	2.6	6.8	850.1	0.2	4.9
Females	\$	856.0	2.9	3.4	719.0	1.1	5.2
Persons	\$	939.1	2.4	4.6	802.5	0.6	5.1
Trend series							
Males	\$	1 013.1	1.8	7.8	853.0	1.0	5.3
Females	\$	852.0	1.8	5.5	719.7	1.4	5.4
Persons	\$	937.3	1.7	6.1	804.7	1.2	5.5
WAGE COST INDEX, Dec qtr 00(c)							
Public sector	no.	109.1	0.8	3.1	111.2	0.8	3.1
Private sector	no.	110.7	0.5	4.2	110.4	0.8	3.5
Total	no.	109.8	0.8	3.6	110.6	0.8	3.4
RETAIL TURNOVER, Feb 01							
Trend series							
Food retailing	\$m	97.7	0.5	14.0	5 185.7	0.7	6.3
Department stores	\$m	26.2	-0.4	2.3	1 109.0	0.4	3.2
Hospitality and services	\$m	46.8	2.2	36.0	2 291.4	0.7	9.1
All other retailing	\$m	99.0	1.4	10.9	4 426.3	0.8	7.7
Total	\$m	269.7	1.0	14.8	13 012.4	0.7	7.0

(a) Base year: 1989-90 = 100.0.

(b) The 14th Series Australian Consumer Price Index was introduced September quarter 2000. Some changes include an updated commodity classification and weighting pattern and changes in composition of some groups. For more details of changes, refer to Information Paper: Introduction of the 14th Series Australian Consumer Price Index (Cat. no. 6456.0) released 29 September 2000.

(c) Base of each index is September quarter 1997 = 100.0.

Indicator	Unit	ACT			Aust.		
		% change from			% change from		
		Latest figure	Previous period	Same period previous year	Latest figure	Previous period	Same period previous year
TOURIST ACCOMMODATION, Dec qtr 00							
Original series							
Room nights occupied	'000	271.9	3.6	4.5	10 543.0	0.9	1.2
Room occupancy rate	%	59.0	2.2	-1.1	58.8	0.4	-0.9
Guest nights	'000	459.2	3.5	8.1	18 775.4	1.0	1.5
Guest arrivals	'000	194.6	-3.6	-3.5	8 206.8	2.9	-1.3
Takings from accommodation	\$'000	28 963.0	0.8	12.2	1 239 908.0	-4.8	11.5
NEW MOTOR VEHICLE REGISTRATIONS, Feb 01							
Original series	no.	1 005	-2.6	-14.8	58 623	6.3	-5.8
Seasonally adjusted series	no.	1 067	-13.3	-12.1	61 822	-6.8	-1.7
Trend series	no.	1 167	-1.0	3.1	66 241	-1.9	7.1
STATE ACCOUNTS, Dec qtr 00							
Trend series (chain volume measure)(a)(b)							
General government final consumption expenditure	\$m	2 343	-3.5	-1.7	28 994	-0.5	1.7
Household final consumption expenditure	\$m	1 776	0.6	5.9	94 635	0.5	2.8
Private gross fixed capital formation	\$m	328	-9.9	-13.9	28 485	-5.4	-7.2
Public gross fixed capital formation	\$m	243	4.7	-8.0	6 886	2.5	-1.1
State final demand	\$m	4 693	-2.0	-0.2	158 953	-0.7	0.5
GROSS STATE PRODUCT (trend, chain volume measure), 1999-00(b)							
	\$m	12 669	4.9	..	620 963	4.3	..
PRIVATE NEW CAPITAL EXPENDITURE, Dec qtr 00							
Original series (at current prices)							
Buildings and structures	\$m	48	60.0	108.7	2 829	9.0	-1.5
Equipment, plant and machinery	\$m	78	32.2	9.9	7 748	6.0	-1.3
Total	\$m	126	41.6	35.5	10 577	6.8	-1.4
Trend series (at current prices)							
Buildings and structures	\$m	41	24.2	95.2	2 625	-7.2	-4.9
Equipment, plant and machinery	\$m	69	-1.4	—	7 464	-0.5	-1.7
Total	\$m	110	6.8	22.2	10 089	-2.4	-2.5
BUSINESS EXPECTATIONS, TRADING PERFORMANCE, OPERATING INCOME							
Short term, expected change previous quarter, Jun qtr 01	%	1.3	-0.2
Medium term, expected change previous year, Mar qtr 02	%	3.3	1.7

(a) Quarterly state final demand details are released as a special data service (Cat. no. 5206.0.40.001).

(b) Reference year for chain volume measures is 1998-99.

Source: Australian Demographic Statistics (Cat. no. 3101.0); Australian National Accounts: Quarterly State Details (Cat. no. 5206.0.40.001); Average Weekly Earnings, States and Australia (Cat. no. 6302.0); Building Activity, Australia (Cat. no. 8752.0); Building Approvals, Australia (Cat. no. 8731.0); Consumer Price Index (Cat. no. 6401.0); Housing Finance, Australia (Cat. no. 5609.0); House Price Indexes (Cat. no. 6416.0); Industrial Disputes, Australia (Cat. no. 6321.0); Job Vacancies, Australia (Cat. no. 6354.0); Labour Force, Australia, Preliminary (Cat. no. 6202.0); New Motor Vehicle Registrations, Australia Preliminary (Cat. no. 9301.0); Private New Capital Expenditure, State Estimates (Cat. no. 5646.0); Retail Trade, Australia (Cat. no. 8501.0); Tourist Accommodation, Australia (Cat. no. 8635.0); Wage Cost Index, Australia (Cat. no. 6345.0).

Indicator	Unit	Latest period	NSW	Vic.	Qld	SA	WA	Tas.	NT	ACT	Aust.
POPULATION	'000	Jun qtr 00	6 463.5	4 765.9	3 566.4	1 497.6	1 883.9	470.4	195.5	310.8	19 157.0
LABOUR FORCE , trend series											
Employed persons	'000	Mar 01	3 022.3	2 309.9	1 684.9	670.7	940.7	200.7	93.5	167.9	9 090.9
Unemployment rate	%	Mar 01	6.0	6.4	8.8	7.3	6.9	8.9	5.4	4.8	6.8
WAGE AND SALARY EARNERS , trend series											
Private sector	'000	Dec qtr 00	1 963.1	1 595.4	1 031.7	426.3	600.9	114.8	55.3	85.0	5 913.7
Public sector	'000	Dec qtr 00	461.8	303.8	293.5	112.7	148.8	40.7	22.3	69.3	1 452.6
Total	'000	Dec qtr 00	2 424.9	1 899.2	1 325.2	539.0	749.7	155.5	77.6	154.3	7 366.3
STATE ACCOUNTS											
Gross state product (chain volume measures)(a)	\$m	1999-00	221 375	157 915	103 691	41 381	66 525	11 367	6 466	12 669	620 963
PRIVATE NEW CAPITAL EXPENDITURE											
Total (at current prices), trend series	\$m	Dec qtr 00	4 166	2 620	1 686	668	1 069	138	76	110	10 089
BUILDING APPROVALS											
Dwelling units approved, original series	no.	Feb 01	2 360	3 212	1 445	469	1 006	99	28	123	8 742
Dwelling units approved, trend series	no.	Feb 01	2 824	3 283	1 850	559	1 135	89	34	131	9 796
Value of non-residential building approved, original series	\$m	Feb 01	370.7	257.8	134.1	36.6	45.1	3.7	3.9	12.4	864.4
Value of all buildings approved, original series	\$m	Feb 01	775.7	802.6	361.7	100.8	218.7	17.7	9.1	37.8	2 324.1
ENGINEERING CONSTRUCTION , original series											
Value of engineering construction work done	\$m	Sep qtr 00	1 534.6	773.4	1 247.8	252.1	457.3	40.9	42.0	55.3	4 403.4
AVERAGE WEEKLY EARNINGS , trend series											
Full-time adult ordinary time earnings	\$	Nov qtr 00	845.2	779.6	755.3	762.8	821.1	743.2	810.0	937.3	804.7
RETAIL TRADE TURNOVER , trend series	\$m	Feb 01	4 496.3	3 125.6	2 465.3	960.5	1 263.4	286.6	135.2	269.7	13 012.4
TOURIST ACCOMMODATION , original series											
Room nights occupied	'000	Dec qtr 00	3 543.3	1 608.7	2 982.4	516.0	945.5	191.0	399.3	271.9	10 543.0
Room occupancy rate	%	Dec qtr 00	59.7	56.2	61.8	53.5	53.9	37.8	69.4	59.0	58.8
NEW MOTOR VEHICLE REGISTRATIONS , trend series	no.	Feb 01	22 405	18 606	12 144	4 167	5 865	1 325	562	1 167	66 241
	Unit	Latest period	Syd.	Melb.	Bris.	Adel.	Perth	Hob.	Dar.	Canb.	Aust.
CONSUMER PRICE INDEX(b)											
Food	no.	Dec qtr 00	134.6	132.8	131.9	134.2	132.7	132.0	132.5	135.9	133.4
Housing	no.	Dec qtr 00	116.1	98.3	112.7	103.9	101.3	105.8	123.9	107.1	107.7
Transportation	no.	Dec qtr 00	138.0	135.6	134.1	137.6	136.3	130.4	131.1	139.3	136.4
All Groups	no.	Dec qtr 00	132.2	130.8	131.6	132.5	128.8	131.2	130.6	131.1	131.3
AVERAGE RETAIL PRICES											
Milk, carton, supermarket sales	1 litre	Dec qtr 00	133	146	141	133	142	126	152	123	..
Bread, white loaf, sliced, supermarket sales	650 g(c)	Dec qtr 00	240	249	224	220	225	237	230	234	..
Beef, rump steak	1 kg	Dec qtr 00	1 255	1 129	1 115	1 284	1 249	1 116	1 195	1 284	..
Chicken, frozen	1 kg	Dec qtr 00	366	330	294	311	363	369	424	370	..
Potatoes	1 kg	Dec qtr 00	120	158	127	81	152	113	142	131	..
Coffee, instant (jar)	150 g	Dec qtr 00	597	584	605	550	631	666	609	615	..
Scotch nip, public bar	30 ml	Dec qtr 00	375	366	312	398	414	303	373	316	..
Private motoring petrol											
Leaded	1 litre	Dec qtr 00	98.6	96.6	86.5	96.6	97.0	97.6	106.1	100.2	..
Unleaded	1 litre	Dec qtr 00	95.5	93.6	83.4	93.5	94.1	95.1	103.2	97.1	..

(a) Experimental series. Users are cautioned these estimates are derived indirectly by calculating a deflator from the expenditure components of the state series concerned. Therefore, in general, the sum of the state estimates does not equal the estimates for Australia. Reference year for chain volume measures is 1998-99.

(b) Base year: 1989-90 = 100.0. The 14th Series Australian Consumer Price Index was introduced September quarter 2000. Some changes include an updated commodity classification and weighting pattern and changes in composition of some groups. For more details of changes, refer to Information Paper: Introduction of the 14th Series Australian Consumer Price Index (Cat. no. 6456.0) released 29 September 2000.

(c) 680g in Hobart and Darwin.

<i>Indicator</i>	<i>Latest period</i>	<i>NSW</i>	<i>Vic.</i>	<i>Qld</i>	<i>SA</i>	<i>WA</i>	<i>Tas.</i>	<i>NT</i>	<i>ACT</i>	<i>Aust.</i>
POPULATION	Jun qtr 00	0.3	0.3	0.4	—	0.3	-0.1	0.4	—	0.3
LABOUR FORCE , trend series										
Employed persons	Mar 01	—	0.1	—	-0.1	0.1	-0.1	0.2	-0.2	—
Unemployment rate	Mar 01	—	—	2.3	—	4.5	—	-5.3	—	—
WAGE AND SALARY EARNERS , trend series										
Private sector	Dec qtr 00	0.8	2.1	0.5	1.7	1.6	-0.3	-1.4	1.4	0.7
Pubic sector	Dec qtr 00	-0.7	-1.4	0.3	-1.2	0.7	-0.7	—	-0.4	—
Total	Dec qtr 00	0.5	1.6	0.5	1.0	1.4	-0.4	-1.0	0.6	0.5
STATE ACCOUNTS										
Gross state product (chain volume measures)(a)	1999-00	3.7	4.6	6.3	3.5	4.6	1.1	—	4.9	4.3
PRIVATE NEW CAPITAL EXPENDITURE										
Total (at current prices), trend series	Dec qtr 00	5.3	-1.4	-6.0	3.7	-7.8	7.8	-29.0	6.8	-2.4
BUILDING APPROVALS										
Dwelling units approved, original series	Feb 01	-12.5	23.2	-16.1	8.6	-4.3	6.5	-36.4	-33.2	-1.0
Dwelling units approved, trend series	Feb 01	-4.1	5.4	-2.4	1.5	-1.5	-2.2	-12.8	-9.0	-0.6
Value of non-residential building approved, original series	Feb 01	-33.0	-3.4	-33.9	4.0	-29.0	-77.6	-60.6	-38.0	-25.9
Value of all buildings approved, original series	Feb 01	-22.5	10.4	-19.8	5.8	-1.8	-39.8	-48.9	-21.4	-10.3
ENGINEERING CONSTRUCTION , original series										
Value of engineering construction work done	Sep qtr 00	-14.6	-10.1	-1.2	-27.4	-31.2	-43.7	-20.6	43.2	16.7
AVERAGE WEEKLY EARNINGS , trend series										
Full-time adult ordinary time earnings	Nov qtr 00	1.2	0.4	1.5	2.2	1.1	0.4	0.8	1.7	1.2
RETAIL TRADE TURNOVER , trend series	Feb 01	0.5	1.0	0.8	0.6	-0.2	0.7	0.1	1.0	0.7
TOURIST ACCOMMODATION , original series										
Room nights occupied	Dec qtr 00	6.6	-1.2	11.4	-3.8	1.2	-23.1	12.6	3.6	0.9
Room occupancy rate	Dec qtr 00	2.8	-1.6	9.4	-5.1	-0.9	-23.9	10.2	2.2	0.4
NEW MOTOR VEHICLE REGISTRATIONS , trend series	Feb 01	-1.2	-1.9	-3.0	-2.1	-2.3	-1.0	-4.9	-1.0	-1.9
	<i>Latest period</i>	<i>Syd.</i>	<i>Melb.</i>	<i>Bris.</i>	<i>Adel.</i>	<i>Perth</i>	<i>Hob.</i>	<i>Dar.</i>	<i>Canb.</i>	<i>Aust.</i>
CONSUMER PRICE INDEX(b)										
Food	Dec qtr 00	0.9	0.9	0.4	0.3	-0.2	0.8	1.1	1.3	0.8
Housing	Dec qtr 00	0.3	0.5	0.6	—	—	0.3	—	0.4	0.3
Transportation	Dec qtr 00	1.0	0.8	-0.4	0.6	0.2	-2.2	0.4	0.5	0.6
All Groups	Dec qtr 00	0.5	0.3	0.2	0.2	0.2	-0.1	0.5	0.3	0.3
AVERAGE RETAIL PRICES (cents)										
Milk, carton, supermarket sales	Dec qtr 00	—	-0.7	-0.7	-2.9	-1.4	-2.3	2.0	0.8	..
Bread, white loaf, sliced, supermarket sales	Dec qtr 00	1.7	1.2	3.2	0.5	1.8	-0.8	2.7	0.4	..
Beef, rump steak	Dec qtr 00	2.6	1.4	1.0	6.8	9.3	3.3	-7.9	4.0	..
Chicken, frozen	Dec qtr 00	-0.8	-6.5	-16.9	-8.3	0.8	13.5	2.4	0.5	..
Potatoes	Dec qtr 00	10.1	17.0	13.4	8.0	12.6	9.7	5.2	8.3	..
Coffee, instant (jar)	Dec qtr 00	-4.3	-6.3	0.2	-0.2	10.7	1.7	12.2	-3.3	..
Scotch nip, public bar	Dec qtr 00	1.1	-0.5	0.3	3.4	0.7	2.4	0.8	2.3	..
Private motoring petrol										
Leaded	Dec qtr 00	2.8	1.8	-1.1	1.3	—	-4.5	2.2	1.6	..
Unleaded	Dec qtr 00	2.7	1.7	-1.4	1.0	0.1	-4.8	2.3	1.6	..

(a) Experimental series. Users are cautioned these estimates are derived indirectly by calculating a deflator from the expenditure components of the state series concerned. Therefore, in general, the sum of the state estimates does not equal the estimates for Australia. Reference year for chain volume measures is 1998-99.

(b) Base year: 1989-90 = 100.0. The 14th Series Australian Consumer Price Index was introduced September quarter 2000. Some changes include an updated commodity classification and weighting pattern and changes in composition of some groups. For more details of changes, refer to Information Paper: Introduction of the 14th Series Australian Consumer Price Index (Cat. no. 6456.0) released 29 September 2000.

INDEX OF FEATURE ARTICLES PUBLISHED IN ACT BUSINESS INDICATORS

<i>Issue</i>	<i>Title</i>	<i>Page reference</i>
Apr 2001	Job Search Experience of Unemployed Persons in the ACT	6
Mar 2001	Population growth in the ACT	6
Feb 2001	Labour Mobility in the ACT	7
Jan 2001	Child care in the ACT, June 1999	7
Dec 2000	Cafes and Restaurants Industry in the ACT	6
Dec 2000	Legal Services Industry in the ACT	8
Nov 2000	Manufacturing Industry in the ACT	6
Oct 2000	Computing Services Industry 1998–99	6
Sep 2000	Motor Vehicle Use in the ACT	6
Aug 2000	Household Expenditure on Goods and Services in the ACT	6
Jul 2000	Small Business in the ACT	6
Jun 2000	Sports Attendance	7
	Attendance at Selected Cultural Venues	8
May 2000	Employee Earnings, Benefits and Trade Union Membership	7
Apr 2000	Emergency Services and Public Transport Usage in the ACT	8
Mar 2000	Forms of Employment	6
Feb 2000	Job Search Experience of Unemployed Persons	6
Jan 2000	Transition from Education to Work, May 1999	6
Dec 1999	Structure of the ACT Economy	6
	Participation in Sport and Physical Activities	7
Nov 1999	Crime and Safety in the ACT	6
Oct 1999	Labour Force Experience in the ACT	6
Sep 1999	Career Experience in the ACT	7
	Carers in the ACT	9
Aug 1999	Stock of Human Resources in Science and Technology	6
Jul 1999	Persons with a Disability in the ACT	6
Jun 1999	Participation in Education in the ACT	6
May 1999	Transition from Education to Work of Persons Aged 15–64 in the ACT	7
Apr 1999	Persons Not in the Labour Force in the ACT	6
Mar 1999	Education and Labour Force Status of the ACT's Young People	6
Feb 1999	Income and Living Standards in the ACT	6
Jan 1999	Education and Training Experience of ACT Residents	6
Dec 1998	Families and Labour Force Status in the ACT	6
Nov 1998	Retrenchment and Redundancy in the ACT	6
	Retail Turnover in the ACT	9
Oct 1998	Research and Experimental Development in the ACT	6
Sep 1998	Labour Force Mobility in the ACT	6
	Income Distribution in the ACT	8
Aug 1998	ACT Investors in Rental Dwellings	6
Jul 1998	Retirement and Retirement Intentions	6
Jun 1998	Profile of Small Business in the ACT	7
May 1998	Participation in Education in the ACT	7
Apr 1998	Retail Turnover in the ACT by Type of Retailing and Shopping Centre	7
	Shopping Preferences in the ACT	7
Mar 1998	Characteristics of Small Business	8
Feb 1998	Weekly Earnings of Employees in the ACT	8

FOR MORE INFORMATION...

- INTERNET** www.abs.gov.au the ABS web site is the best place to start for access to summary data from our latest publications, information about the ABS, advice about upcoming releases, our catalogue, and Australia Now—a statistical profile.
- LIBRARY** A range of ABS publications is available from public and tertiary libraries Australia-wide. Contact your nearest library to determine whether it has the ABS statistics you require, or visit our web site for a list of libraries.
- CPI INFOLINE** For current and historical Consumer Price Index data, call 1902 981 074 (call cost 77c per minute).
- DIAL-A-STATISTIC** For the latest figures for National Accounts, Balance of Payments, Labour Force, Average Weekly Earnings, Estimated Resident Population and the Consumer Price Index call 1900 986 400 (call cost 77c per minute).

INFORMATION SERVICE

Data which have been published and can be provided within five minutes are free of charge. Our information consultants can also help you to access the full range of ABS information—ABS user-pays services can be tailored to your needs, time frame and budget. Publications may be purchased. Specialists are on hand to help you with analytical or methodological advice.

- PHONE** **1300 135 070**
- EMAIL** **client.services@abs.gov.au**
- FAX** 1300 135 211
- POST** Client Services, ABS, GPO Box 796, Sydney 1041

WHY NOT SUBSCRIBE?

ABS subscription services provide regular, convenient and prompt deliveries of ABS publications and products as they are released. Email delivery of monthly and quarterly publications is available.

- PHONE** 1300 366 323
- EMAIL** subscriptions@abs.gov.au
- FAX** 03 9615 7848
- POST** Subscription Services, ABS, GPO Box 2796Y, Melbourne 3001



2130380004010
ISSN 1320-808X

RRP \$17.50